

Ditre Italia Products

2024

Tessuti outdoor ***outdoor Fabrics***

DITRE
italia



VICTORIA 587



VICTORIA 588



VICTORIA 589



VICTORIA 590




VICTORIA 591



VICTORIA 592

INFORMAZIONI TECNICHE / TECHNICAL INFORMATION

Composizione / composition	100% PC
Martindale / martindale	20.000 cicli/cycles
Pilling / Pilling	4/5

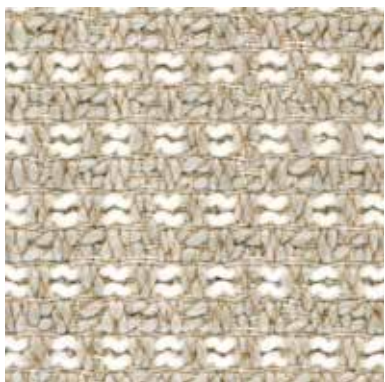
 **idrorepellente**
water repellent

MANUTENZIONE / MAINTENANCE



CAT. V

Versailles



VERSAILLES 058



VERSAILLES 061



VERSAILLES 063



VERSAILLES 092

INFORMAZIONI TECNICHE / TECHNICAL INFORMATION

Composizione / composition	100% PP
Martindale / martindale	40.000 cicli/cycles
Pilling / Pilling	5

MANUTENZIONE / MAINTENANCE



CAT. V

Valley



VALLEY 019



VALLEY 042



VALLEY 053



VALLEY 093

INFORMAZIONI TECNICHE / TECHNICAL INFORMATION

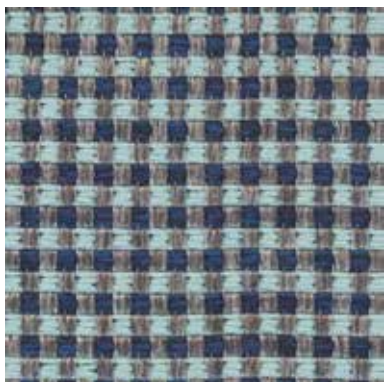
Composizione / composition	100% PP
Martindale / martindale	40.000 cicli/cycles
Pilling / Pilling	5

MANUTENZIONE / MAINTENANCE



CAT. V

Valencia



VALENCIA 004



VALENCIA 006



VALENCIA 007



VALENCIA 009

INFORMAZIONI TECNICHE / TECHNICAL INFORMATION

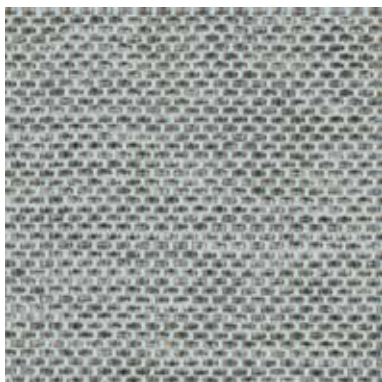
Composizione / composition	95%PP - 5%PL
Martindale / martindale	50.000 cicli/cycles
Pilling / Pilling	4

MANUTENZIONE / MAINTENANCE



CAT. U

Urbino



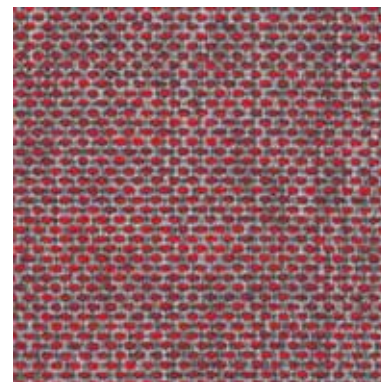
URBINO 031



URBINO 032



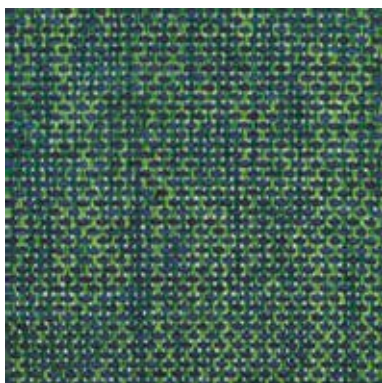
URBINO 033



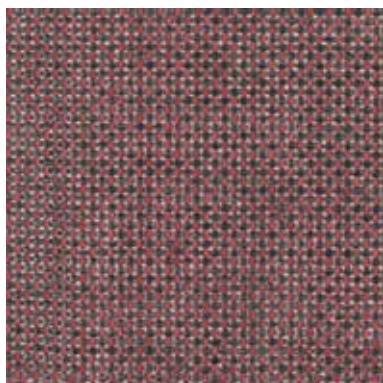
URBINO 034



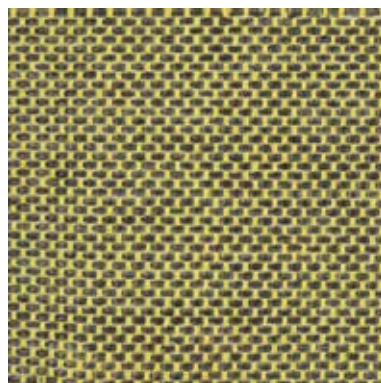
URBINO 035



URBINO 036



URBINO 037



URBINO 038

INFORMAZIONI TECNICHE / TECHNICAL INFORMATION

Composizione / composition	63%PP - 37%PL
Martindale / martindale	50.000 cicli/cycles
Pilling / Pilling	4

MANUTENZIONE / MAINTENANCE



CAT. U


Upper




UPPER 649

INFORMAZIONI TECNICHE / TECHNICAL INFORMATION

Composizione / composition	100% PC
Martindale / martindale	26.000 cicli/cycles
Pilling / Pilling	4

 **idrorepellente**
water repellent

 **antimacchia**
stain resistant

MANUTENZIONE / MAINTENANCE





UPDATE 001



UPDATE 002



UPDATE 003



UPDATE 004



UPDATE 009



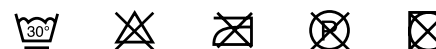
UPDATE 010

INFORMAZIONI TECNICHE / TECHNICAL INFORMATION

Composizione / composition	93% RPP - 7% PL
Martindale / martindale	35.000 cicli/cycles
Pilling / Pilling	4/5

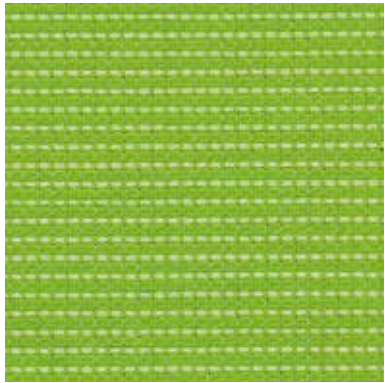
 Eco-friendly

MANUTENZIONE / MAINTENANCE



CAT. U

Umbria




UMBRIA 839




UMBRIA 840

INFORMAZIONI TECNICHE / TECHNICAL INFORMATION

Composizione / composition	100% PC
Martindale / martindale	20.000 cicli/cycles
Pilling / Pilling	5

 **idrorepellente**
water repellent

 **antimacchia**
stain resistant

MANUTENZIONE / MAINTENANCE



CAT. U

Umago



UMAGO 942




UMAGO 944




UMAGO 945

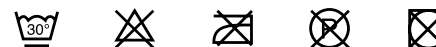
INFORMAZIONI TECNICHE / TECHNICAL INFORMATION

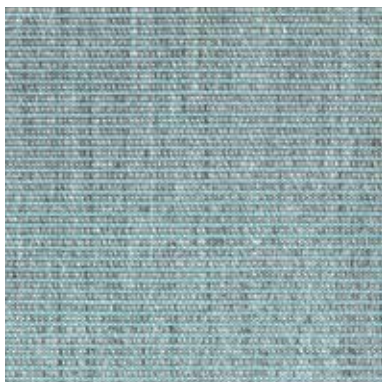
Composizione / composition	100% PC
Martindale / martindale	20.000 cicli/cycles
Pilling / Pilling	4

 **idrorepellente**
water repellent

 **antimacchia**
stain resistant

MANUTENZIONE / MAINTENANCE

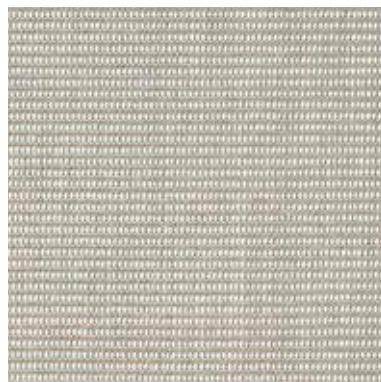




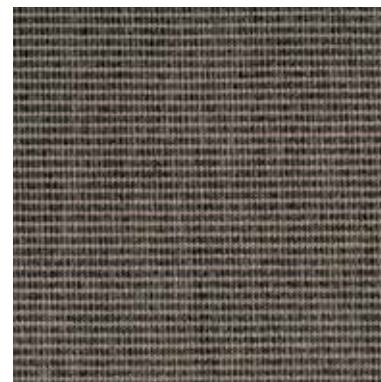
TROPIC 502



TROPIC 503



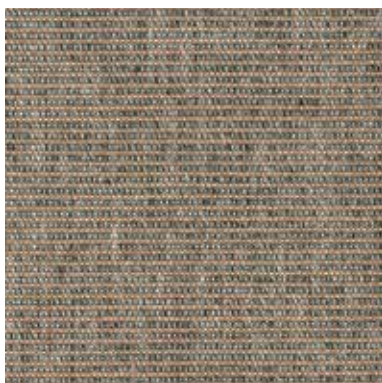
TROPIC 511



TROPIC 532




TROPIC 534



TROPIC 535

INFORMAZIONI TECNICHE / TECHNICAL INFORMATION

Composizione / composition	100% PC
Martindale / martindale	20.000 cicli/cycles
Pilling / Pilling	5


idrorepellente
 water repellent

MANUTENZIONE / MAINTENANCE

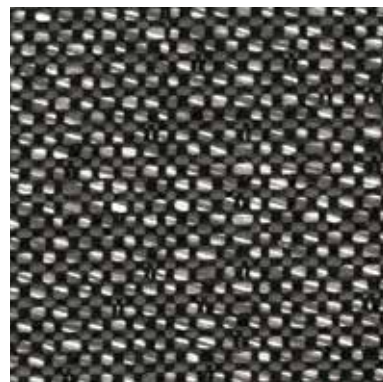




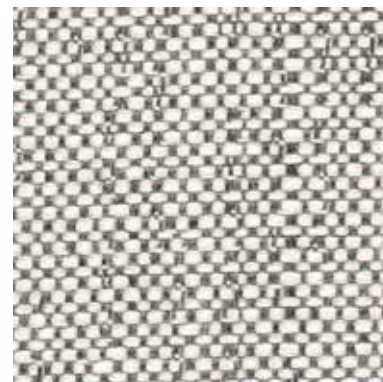
THAI 570



THAI 573



THAI 575



THAI 576




THAI 577



THAI 580

INFORMAZIONI TECNICHE / TECHNICAL INFORMATION

Composizione / composition	100% PC
Martindale / martindale	20.000 cicli/cycles
Pilling / Pilling	5

 **idrorepellente**
water repellent

MANUTENZIONE / MAINTENANCE

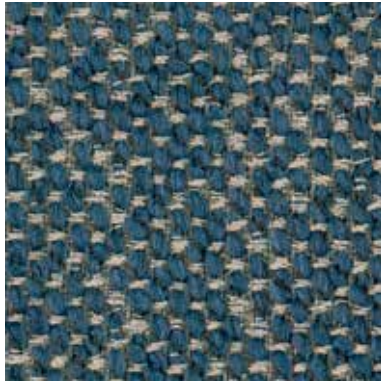


CAT. T

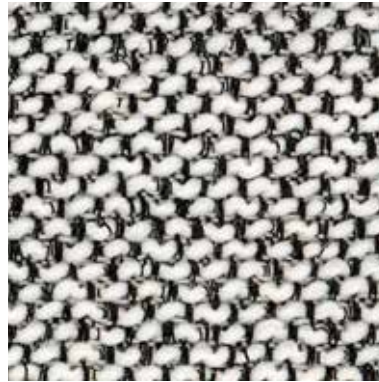
Tivoli



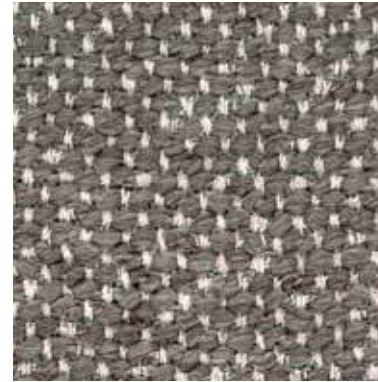
TIVOLI 007



TIVOLI 008



TIVOLI 018

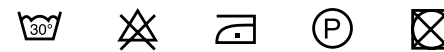


TIVOLI 084

INFORMAZIONI TECNICHE / TECHNICAL INFORMATION

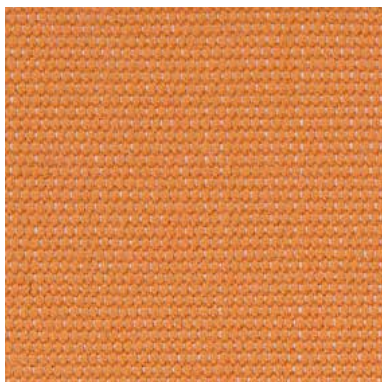
Composizione / composition	100% PP
Martindale / martindale	30.000 cicli/cycles
Pilling / Pilling	4

MANUTENZIONE / MAINTENANCE



CAT. T

Taipei




TAIPEI 757




TAIPEI 758

INFORMAZIONI TECNICHE / TECHNICAL INFORMATION

Composizione / composition	100% PC
Martindale / martindale	20.000 cicli/cycles
Pilling / Pilling	4

 **idrorepellente**
water repellent

 **antimacchia**
stain resistant

MANUTENZIONE / MAINTENANCE





PERTH 001



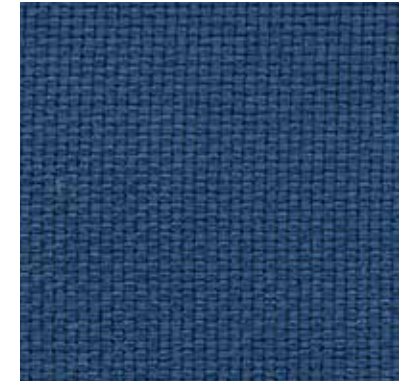
PERTH 002



PERTH 003



PERTH 004



PERTH 009



PERTH 010

INFORMAZIONI TECNICHE / TECHNICAL INFORMATION

Composizione / composition	100% REC. PP
Martindale / martindale	50.000 cicli/cycles
Pilling / Pilling	4/5

 Eco-friendly

MANUTENZIONE / MAINTENANCE



**DITRE
ITALIA**

31016 Cordignano (Treviso) Zona Industriale Via del Lavoro, 21
Tel. +39.0438.9999 Fax +39.0438.999993 www.ditreitalia.it info@ditreitalia.it